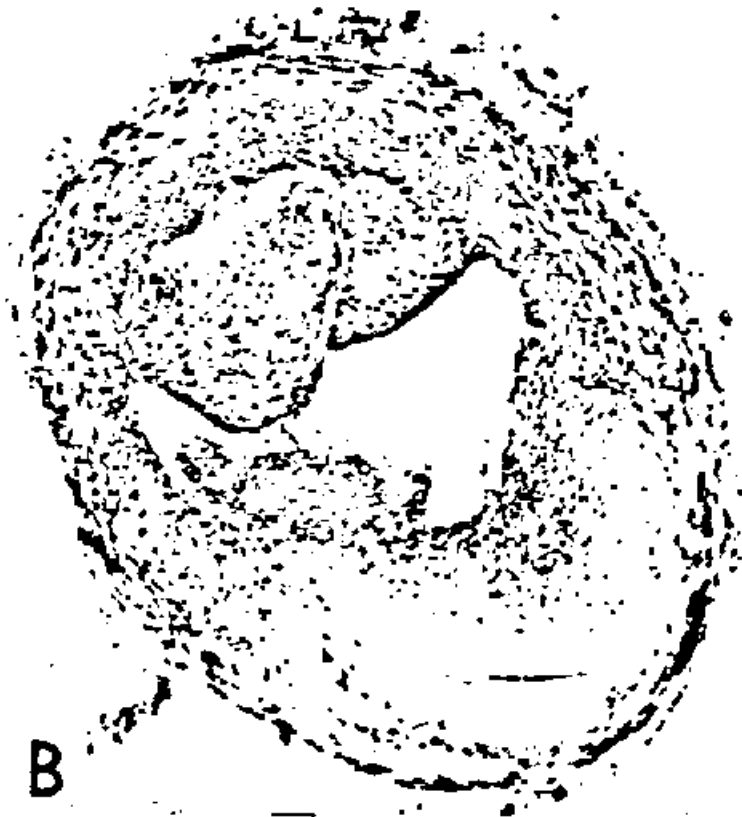


A



B

EXPLANATION OF FIGURE 1

A, photomicrograph of one of the intimal hemorrhages in case 1. The hemorrhage lies close to the media in the outer zone of an atheromatous focus. Hematoxylin and eosin; $\times 45$.

B, photomicrograph of one of the main cerebral arteries in case 1 showing a capillary arising from the arterial lumen and traversing the thickened intima. Hematoxylin and eosin; $\times 45$.